

Carbon C150

Unboxing and connect.

Introduction

Carbon C100/C100+ are mobile payment terminals with the ability to be used in standalone applications. The product includes dual-band Wi-Fi, Bluetooth and 4G.

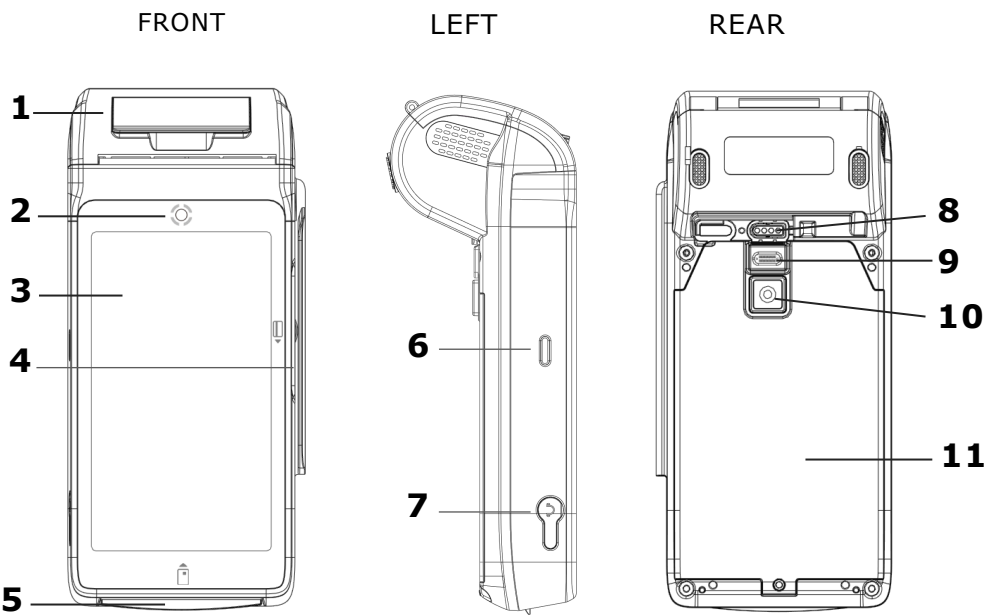
This document contains two sets of instructions, one on how to unbox and install a network configured terminal and one on how to unbox and connect a USB configured terminal.

Introduction	2
1 Terminal overview	3
2 Unboxing	4
3 Prepare your terminal.....	5
3.1 Install receipt paper.	5
3.2 Charge the battery.	5
3.3 Install SIM card (optional).....	7
4 Start the terminal.....	8

Version history

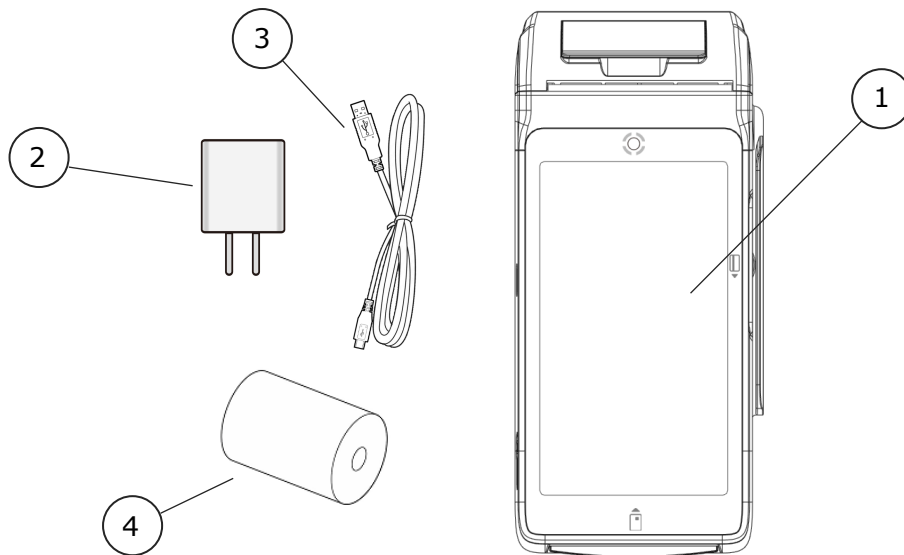
Version	Date	Notes
1.0	2023-11-01	Document created

1 Terminal overview



Id	Description
1	Printer
2	Front facing camera
3	Display
4	Magnetic card reader (MSR)
5	Chip card reader (SCR)
6	Power button
7	Headphone jack
8	Dedicated fast charging port
9	USB Port (USB2.0 Type C)
10	Rear facing camera
11	Battery cover

2 Unboxing

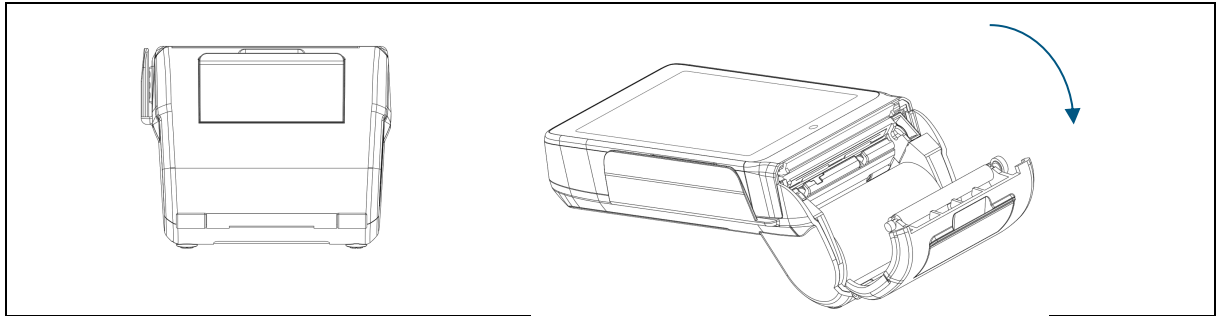


- 1 Payment terminal
- 2 USB power plug
- 3 USB charging cable
- 4 Receipt paper roll

3 Prepare your terminal.

3.1 Install receipt paper.

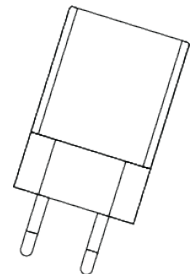
Gently lift the latch of the printer cover, then pull to open the cover. Put in the paper roll, such that the paper is feeding out of the printer according to the direction of the arrow shown below. Close the printer cover by pressing its center to the direction of the display. Tear off any excess paper by the help of the serrated blade at the exit of the printer.



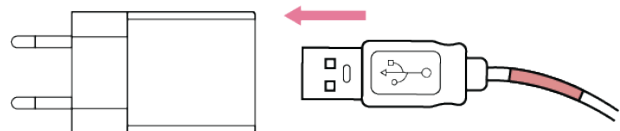
3.2 Charge the battery.

Before you can start to use your terminal, the battery must be fully charged.

Find the USB power plug.

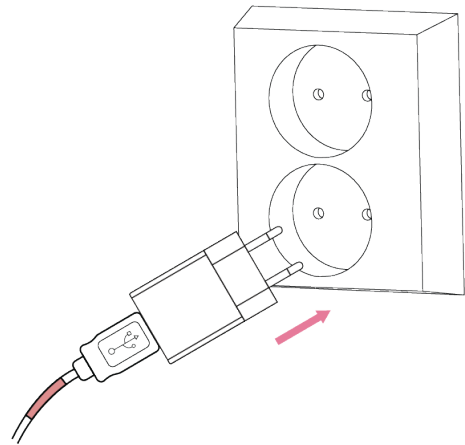


Connect the USB cable with the Type A connector into the USB power plug.



Insert the power plug into a power outlet and connect the USB cable type-C end to the terminal.

The terminal battery will now be charging. The battery has to be fully charged before the terminal is used for the first time.



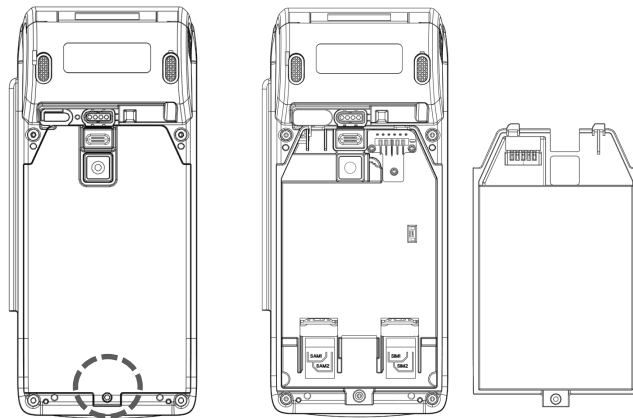
- *Charge the terminal fully before initial use.*
- *Ensure the unit was not stored for over one month without charging.*
- *Battery life will depend on how the terminal is used and how often its charged..*

Caution:

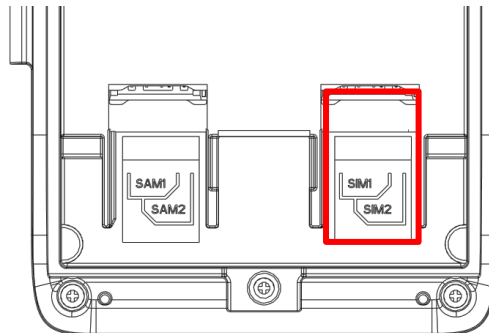
Use only the AC adapter approved and provided with the terminal for this device. Use of any other AC adapter may cause a risk of fire or explosion.

3.3 Install SIM card (optional)

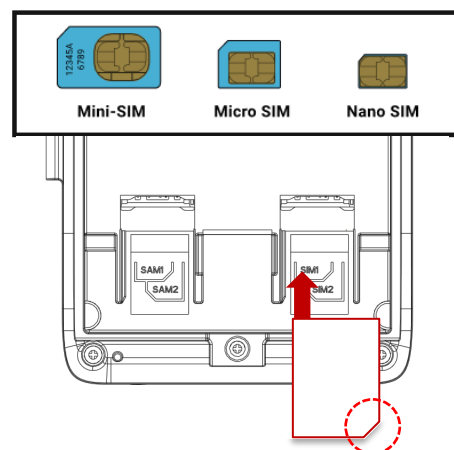
Remove the back cover by removing the screw located at the bottom of the terminal and then gently remove the battery.



Identify the two SIM slots located in the bottom right corner inside the battery compartment.



Now, insert a mini-SIM with the chip facing up, like the illustration. Close the battery compartment by placing the battery in its original space. Remember to re-install the screw.



4 Start the terminal.

Once you have completed the steps under section 3 then you are ready to start your terminal for the first time.

To power on the device: Press and hold the Power button for more than 3 seconds until the display lights up.

To power off the device: Press and hold the Power button for more than 3 seconds until a "pop up" menu is shown on the display. Then press the "Power off" icon in the menu.

Automatic power off: When the device is left unattended for two hours, it will power off automatically.

